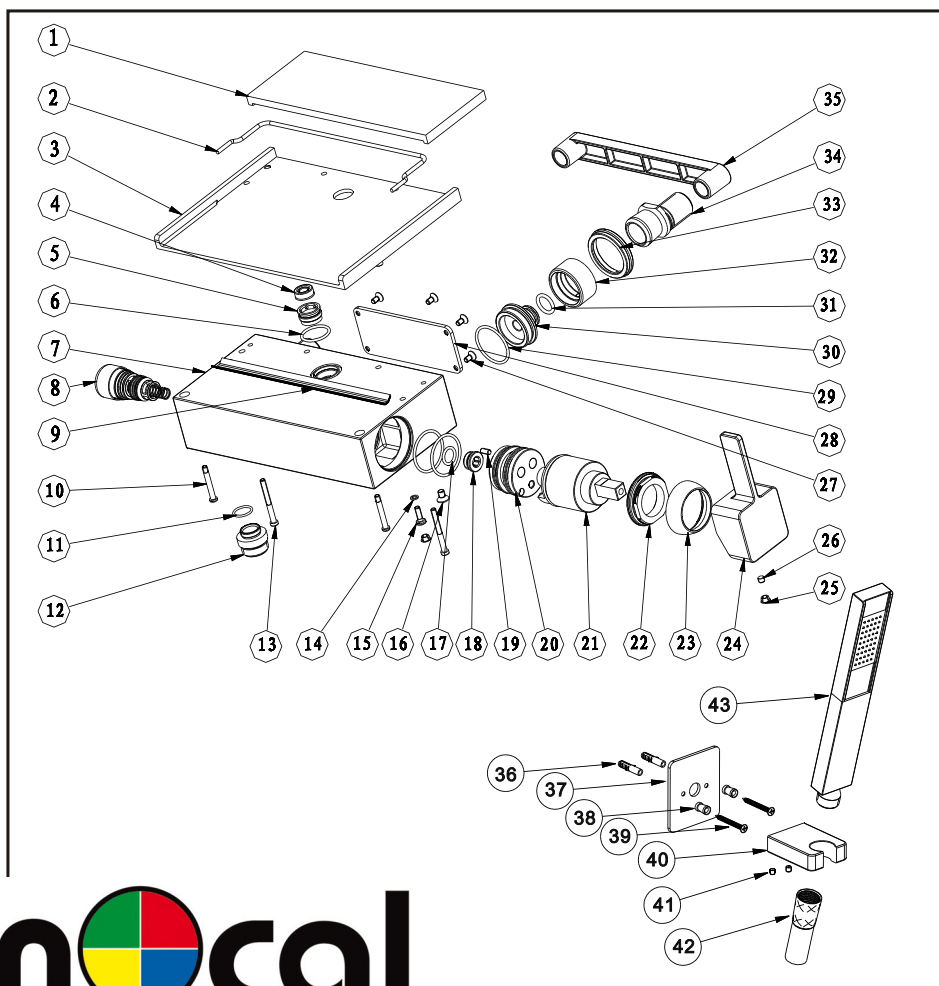


Bath/shower mixer with shower set

Installation Instruction

Please read this instruction carefully so as to avoid the installation difficulty.

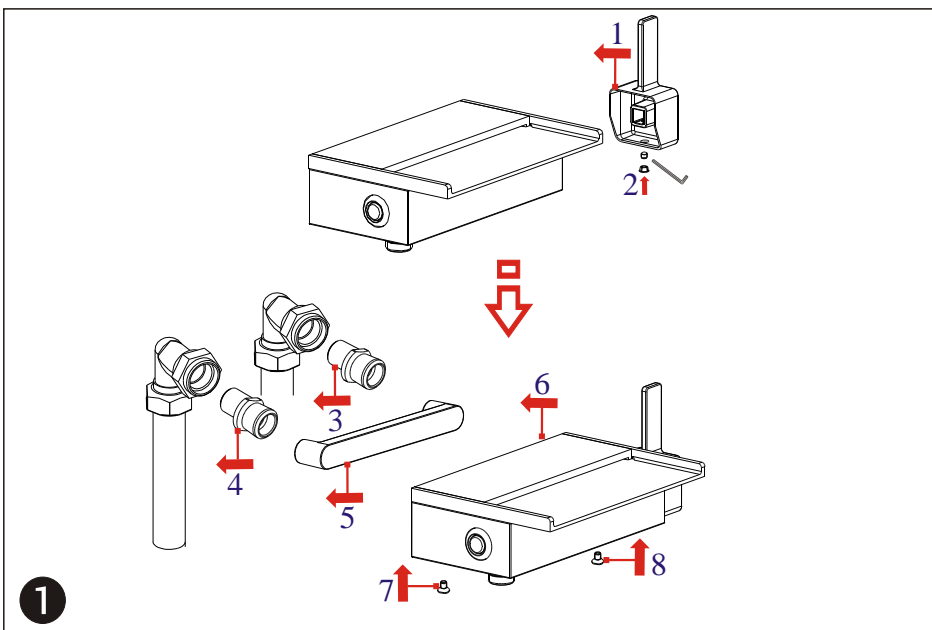


Components List

No.	Component	Quantity
1	Plate	1
2	Sealing strip	1
3	Cover	1
4	Flow rate controller	1
5	Union	1
6	O-ring	1
7	Main body	1
8	Diverting valve	1
9	Filter	7
10	Cross-head screw	2
11	O-ring	1
12	Union	1
13	Cross-head screw	2
14	Spring shim	2
15	Cross-head screw	2
16	Female allen screw	2
17	O-ring	1
18	Stopper	1
19	Female allen screw	1
20	Seat	1
21	Ceramic cartridge	1
22	Fastener	1
23	Cap	1
24	Handle	1
25	Cover	7
26	Fastening screw	1
27	Female allen screw	4
28	Plate	1
29	O-ring	4
30	Union	2
31	O-ring	2
32	Union	2
33	Fastening nut	2
34	S-union	2
35	Adjusting rod	1
36	Plastic sleeve	2
37	Plate	1
38	Cover	2
39	Screw	2
40	Socket	1
41	Female allen screw	2
42	Hose	1
43	Hand shower	1

Installation Step

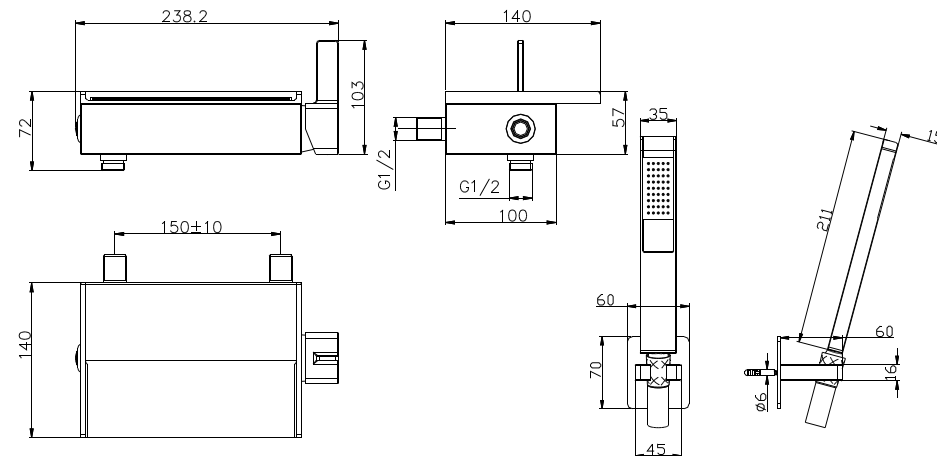
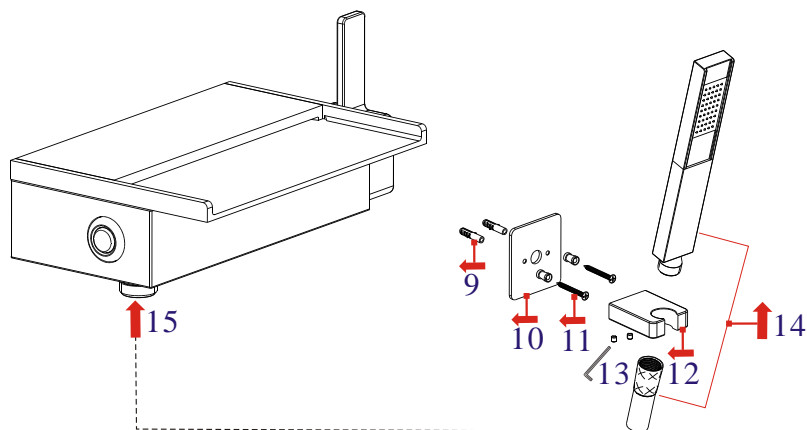
Installation Fig



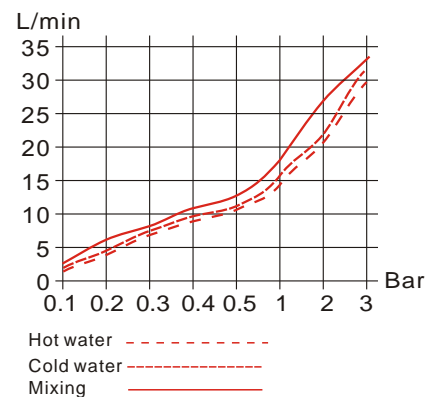
1

1. According to the fig, install the S-unions and make sure the distance between them.
2. Keep two S-unions in one level.
3. Inspect the distance between two S-unions with the adjusting rod.

2



Flow rate Curves



Test pressure: 1.6MPa (16bar)

Flow pressure:

Min 0.05MPa

Max 1.60MPa

Recommended pressure:

0.1MPa to 0.8MPa (1 to 8 bar)

Note

1. Ensure to clean the water supply pipe before installing to avoid being jammed.
2. The cold-water supply must be connected on the right and the hot-water supply on the left.
3. Check the installing dimension according to the Figure and ensure it is installed correctly.
4. Hot-water inlet must not be over 80°C.